

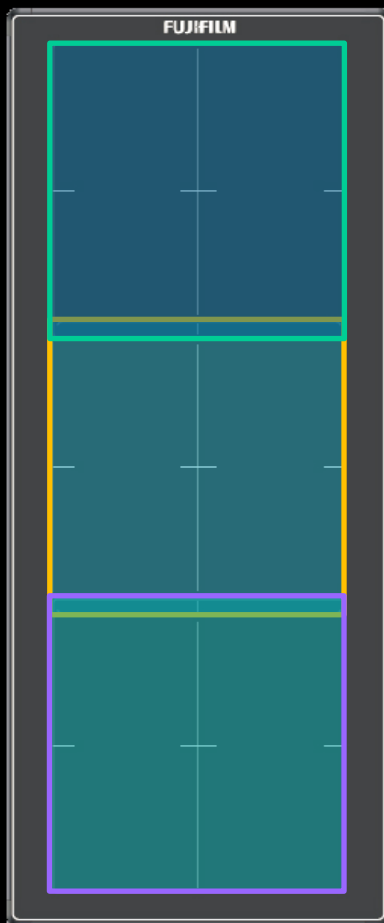
**FDR D-EVO GL**



**The world's *first*  
single-exposure  
Long Length DR.**

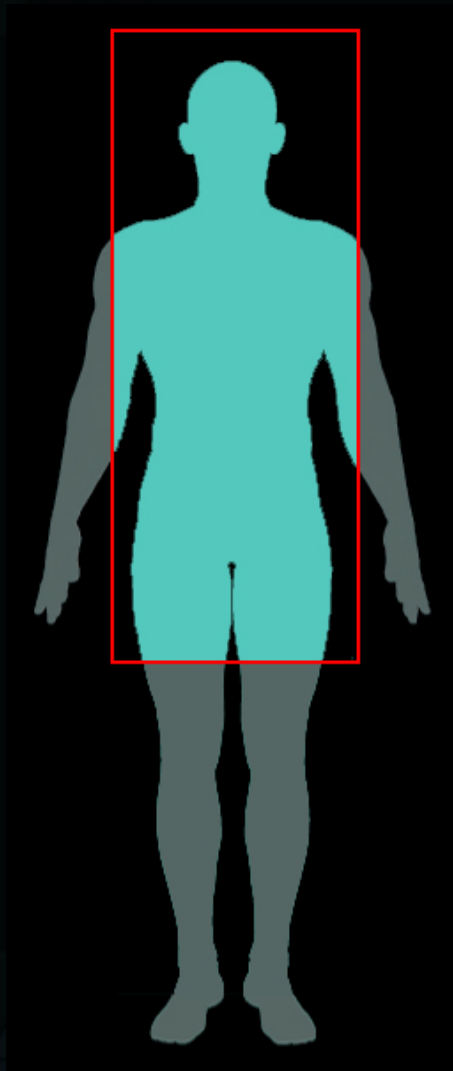
**FUJIFILM**

*FDR D-EVO GL*

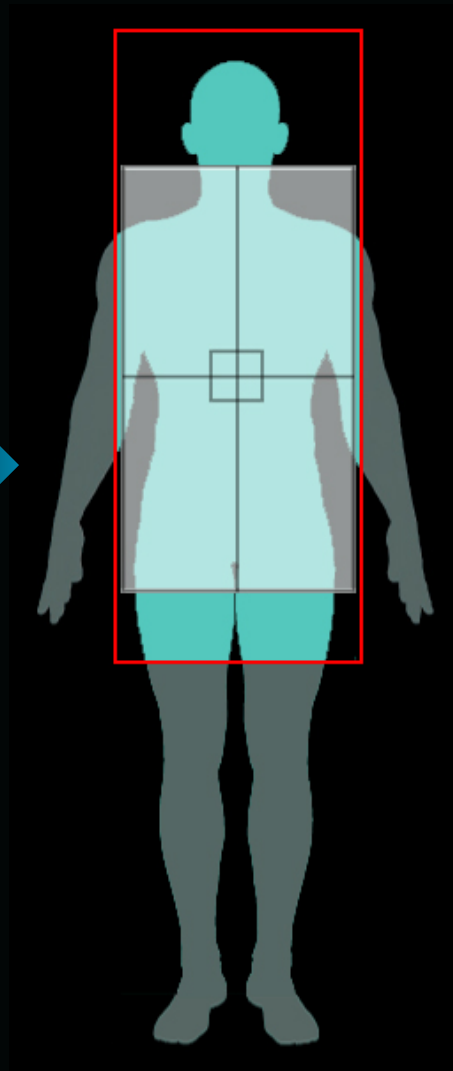


FUJIFILM

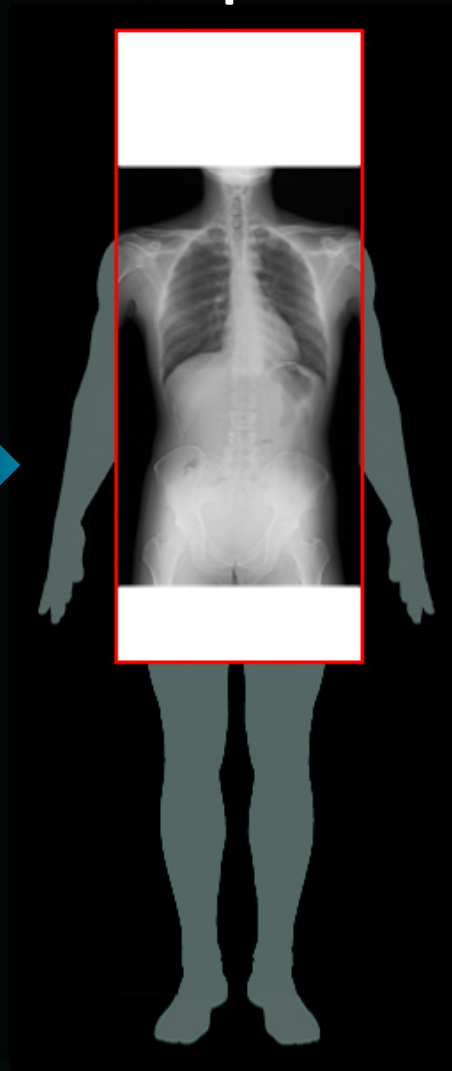
## Position

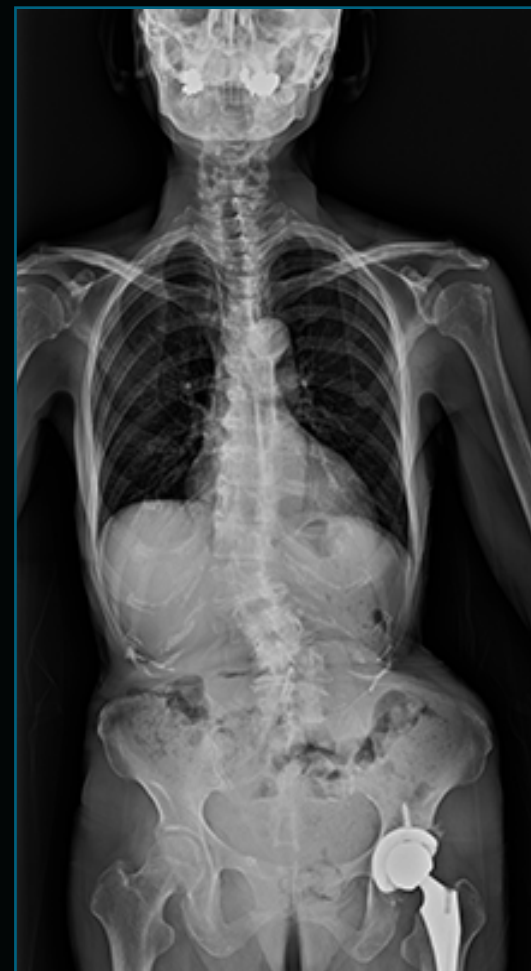


## Collimate

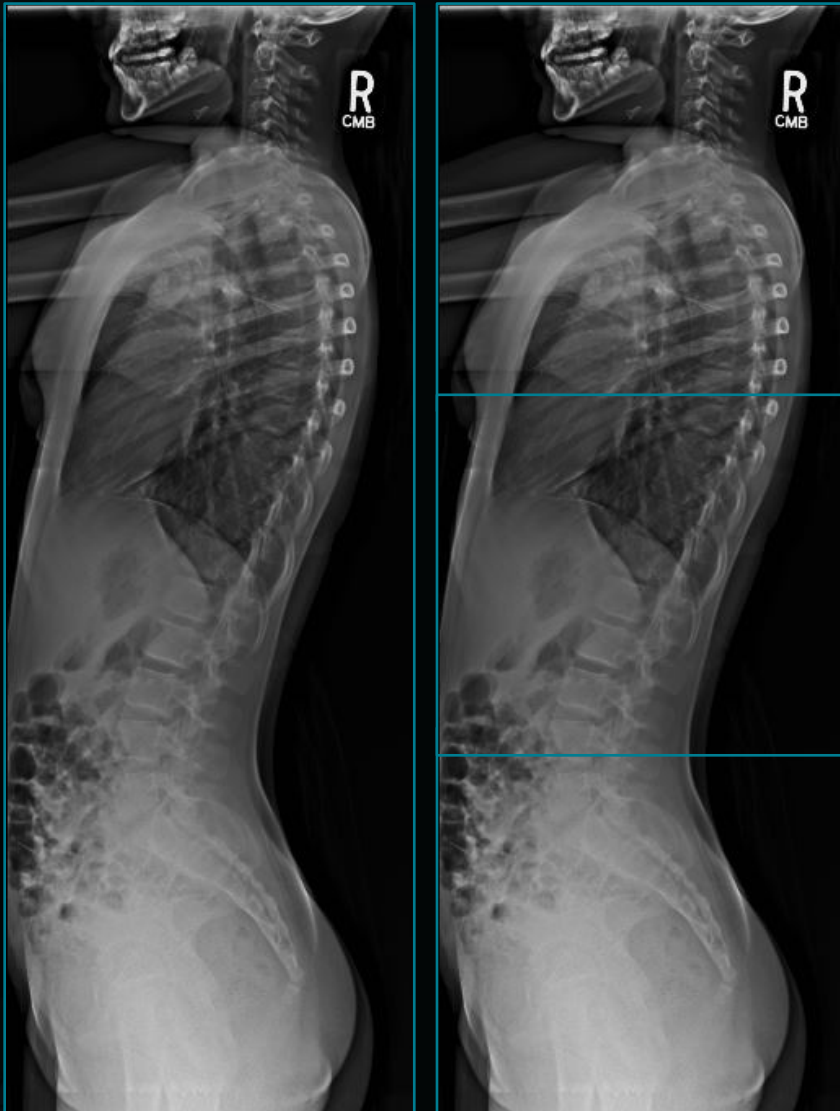


## Acquire








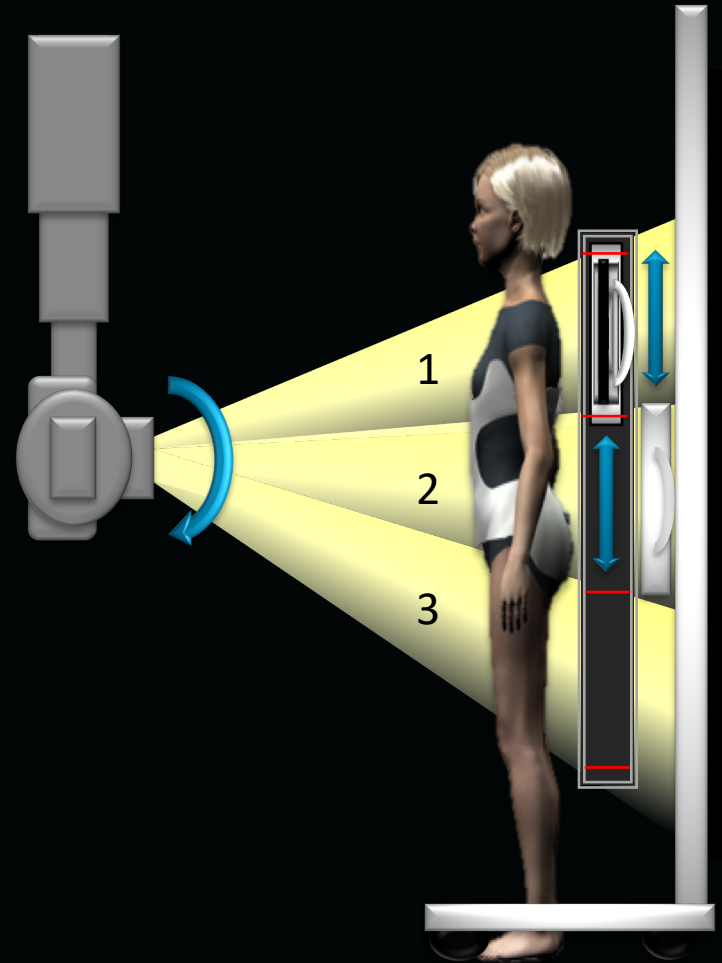


## Compare to single-exposure CR

- ✓ Faster preview and completion
- ✓ 40-50% lower dose
- ✓ Even lower with  Virtual Grid

## Compare to multi-exposure DR

- ✓ Single exposure
- ✓ Faster setup
- ✓ Fewer movement artifacts
- ✓ Fewer retakes

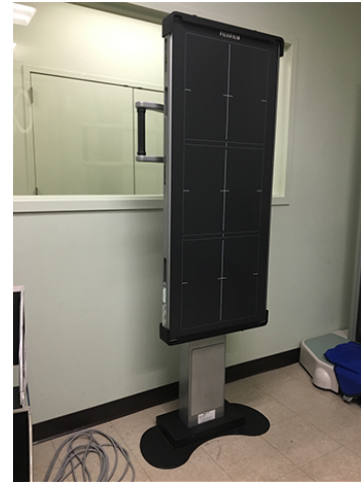




—Portable, motorized vertical—



—Floor-Mounted, manual vertical / lateral—



—Portable, manual vertical / lateral / supine—





# Can be used with a portable or OTC





## Single exposure



Fully stitched image  
available ~ 22 sec. after single exposure

\* Picture taken from monitor ...  
(not representative of image quality)  
(59" SID, 30" FOV)